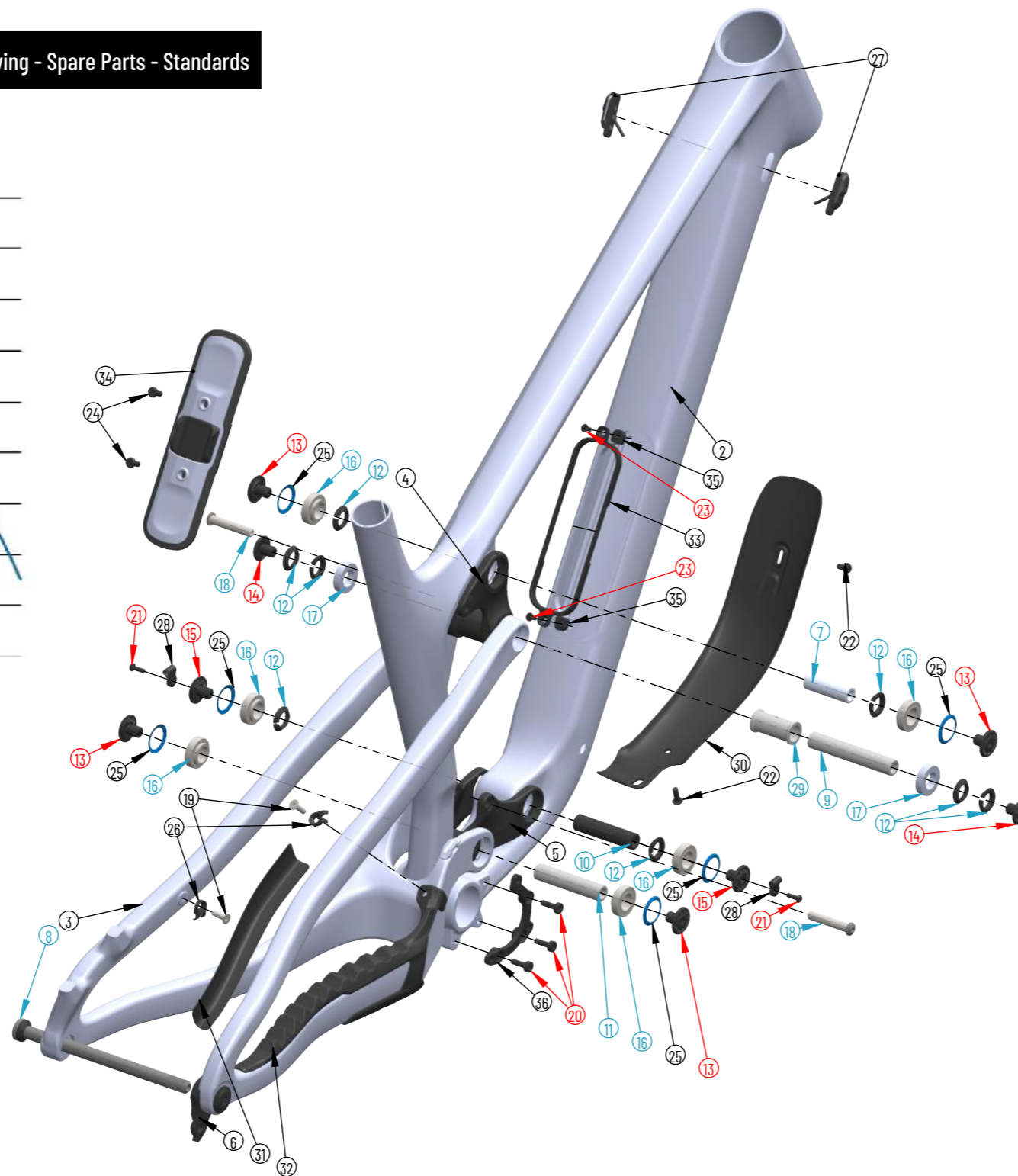
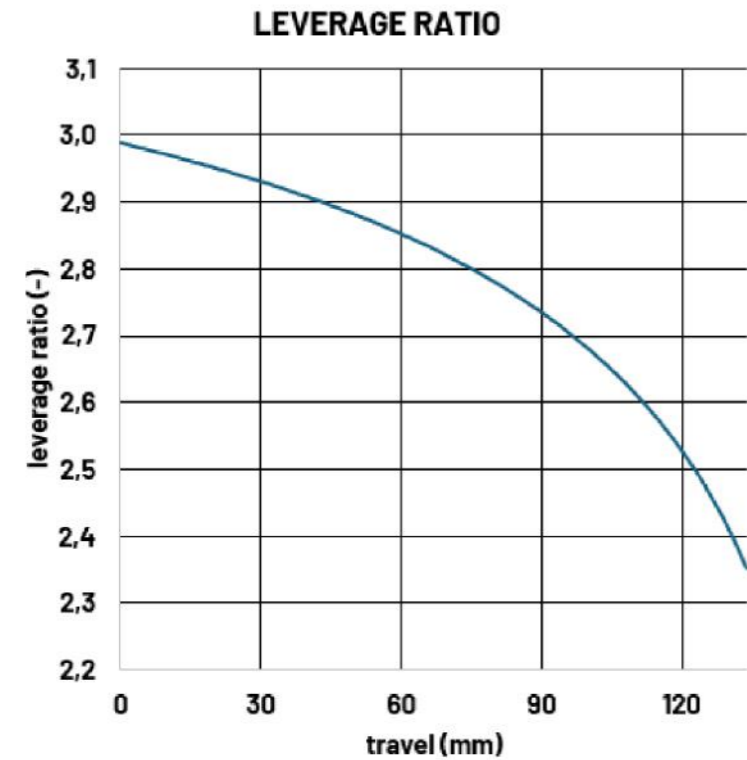


HUGENE 3 CF

Exploded Drawing - Spare Parts - Standards



Standards

| | |
|---------------------|--------------------------|
| BB standard | BSA 73 mm |
| Max. fork travel | 150 mm (AC length 561) |
| Shock length | 210 mm |
| Shock stroke | 47,5 mm |
| Shock mount top | 30 mm |
| Shock mount bottom | 30 mm |
| Rear wheel travel | 130 mm |
| Brake mount | Post mount 180 mm |
| Seat post diameter | 31.6 mm |
| Seat clamp diameter | 36.4 mm |
| Head set (S.H.I.S) | Top: ZS56 / Bottom: ZS56 |
| Rear wheel axle | x12 (148mm-Boost) |
| Rear hub width | 148 mm (Boost) |
| Chain line | 55 mm (Boost) |
| Chain guide mount | ISCG 05 (Boost) |
| Tire size front | 29"x2.5 |
| Tire size rear | 29"x2.5 |

 Add Loctite 243 on thread

 Add Grease

| Item No. | Part No. | Part name | Qty. | Torque |
|----------|----------|------------------------------|------|--------|
| 2 | 002315 | Front_triangle | 1 | |
| 3 | 001260 | Rear_triangle_HugeneCF29 | 1 | |
| 4 | 001259 | Upper_lever | 1 | |
| 5 | 002423 | Lower_link | 1 | |
| 6 | 001739 | UDH_hanger | 1 | 20 Nm |
| 7 | 001261 | Axle_15dia_46mm_M10x1 | 1 | |
| 8 | 001284 | Propain_Sixpack_X12_axle_UDH | 1 | 12 Nm |
| 9 | 001263 | Axle_15x88xM10_clamp_type | 1 | |
| 10 | 000616 | Axle_15x62mmxM10x1 | 1 | |
| 11 | 001115 | Axle_15dia_69-5mm_M10x1 | 1 | |
| 12 | 000604 | Clamp_ring_15mm_axle | 8 | |
| 13 | 000600 | 15mm_Axle_Cap | 4 | 15 Nm |
| 14 | 000605 | 15mm_clamp_Axle_Cap | 2 | 15 Nm |
| 15 | 001714 | Bolt_M10x1x12custom | 2 | 15 Nm |
| 16 | 000176 | Bearing_15x28x7_flange_61902 | 6 | |
| 17 | 000006 | Bearing_15x28x7 | 2 | |
| 18 | 000991 | Bolt_M8x43_custom | 2 | 15 Nm |
| 19 | 000474 | Bolt_M5x16_countersunk | 2 | 6 Nm |
| 20 | 001538 | Bolt_M6x16_DIN6912 | 3 | 8 Nm |
| 21 | 001715 | Bolt_M4x12_ISO7380-1 | 2 | 3 Nm |
| 22 | 002712 | Bolt_M5x14_ISO7380-1 | 2 | 6 Nm |
| 23 | 000019 | Bolt_M4x10 | 2 | 6 Nm |
| 24 | 002317 | Bolt_M5x12custom | 2 | 6 Nm |
| 25 | 000602 | Dust_cap_seal | 6 | |
| 26 | 000057 | Cable_guide_1 | 2 | |
| 27 | 002342 | Cable_guide_X2 | 2 | |
| 28 | 001713 | Action_cable_base | 2 | |
| 29 | 001262 | Alloy_Bushing_41mm | 1 | |
| 30 | 002376 | DT_protector | 1 | |
| 31 | 001480 | SS_protector_Hugene_2021 | 1 | |
| 32 | 002407 | CS_protector | 1 | |
| 33 | 002365 | Pocket_Frame | 1 | |
| 34 | 002373 | Frame_pocket_complete | 1 | |
| 35 | 002434 | Nut_M4x5custom | 2 | |
| 36 | 001857 | ISCG05_mount | 1 | |

PROPAIN