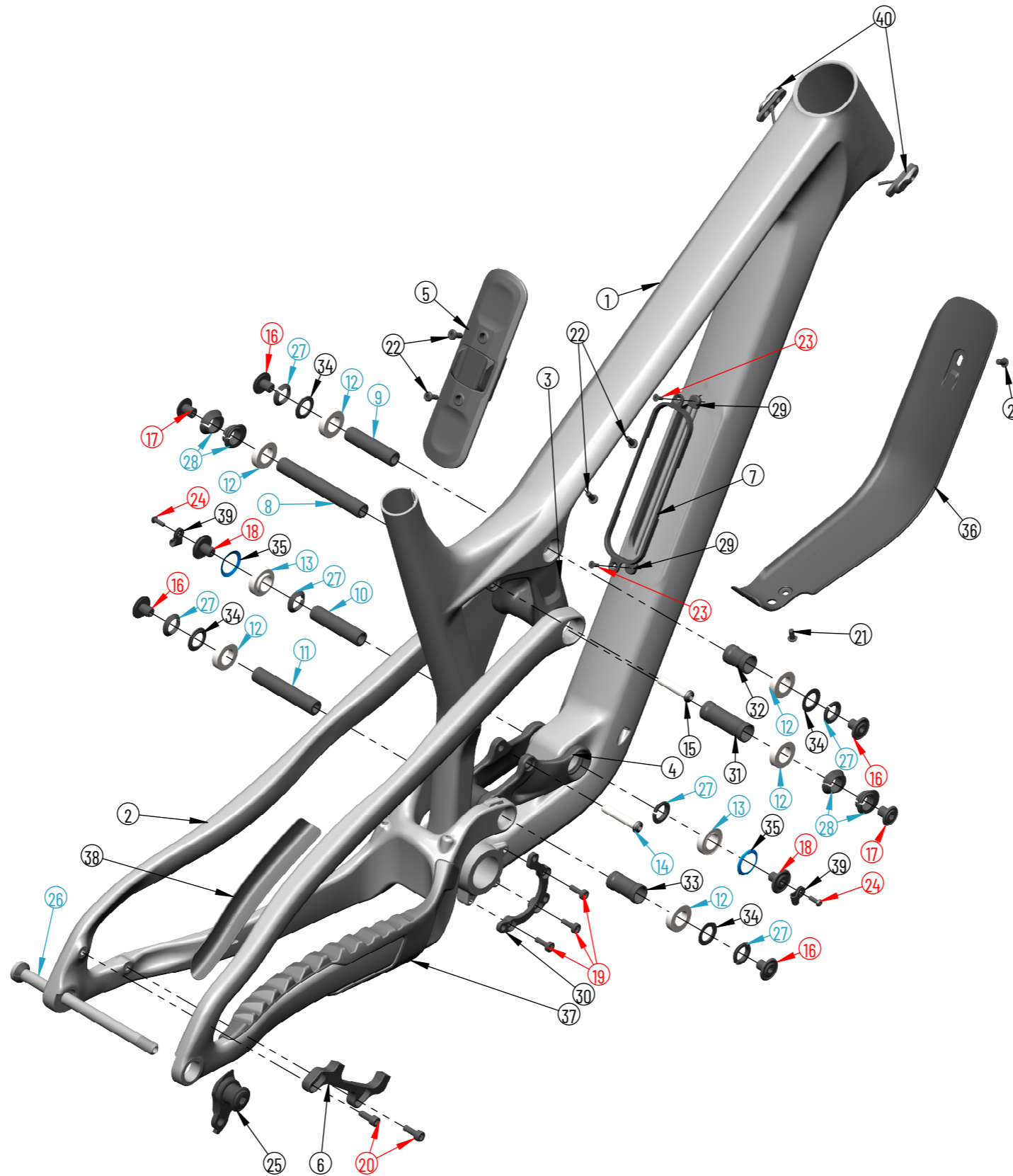
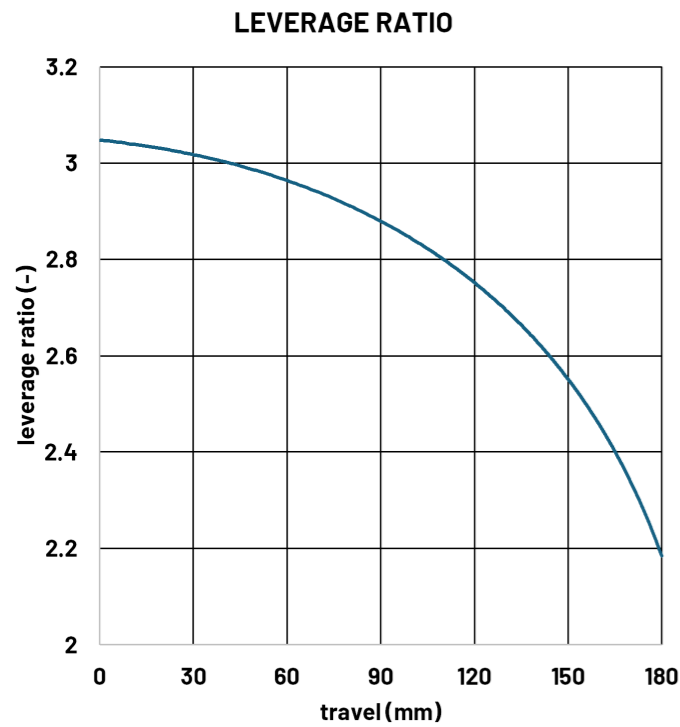


SPINDRIFT 5 CF

Exploded Drawing - Spare Parts - Standards



Standards

Max. fork length (axle to crown)	606 mm
Shock length	230 mm
Shock stroke	65 mm
Shock mount top	25 mm
Shock mount bottom	30 mm
Rear wheel travel	180 mm
Brake mount	Post mount 180 & 200 mm
Seat post diameter	31.6 mm
Seat clamp diameter	36.4 mm
Head set (S.H.I.S)	Top: ZS56 / Bottom: ZS56
Rear wheel axle	x12 (148mm-Boost)
Rear hub width	148 mm (Boost)
Chain line	55 mm (Boost)
Chain guide mount	ISCG 05 (Boost)
Tire size front	29"
Tire size rear	27.5" / 29"

Item No.	Part. No.	Part name	Qty.	Torque
1	002000	Front_triangle	1	
2	002083	Rear_triangle	1	
3	002092	Upper_link	1	
4	001997	Lower_link	1	
5	002373	Frame_pocket_complete	1	
6	001854	Brake_Adapter_180/200	1	
7	002365	Pocket_Frame	1	
8	001953	Axle_15x108xM10x1	1	
9	002098	Axle_15x60xM10x1	1	
10	000616	Axle_15dia_62mm_M10x1	1	
11	002099	Axle_15x78,5xM10x1	1	
12	000006	Bearing_15x28x7_S61902-2RS	6	
13	000176	Bearing_15x28x7_flange_61902	2	
14	001645	Bolt_M8x44custom	1	15 Nm
15	001622	Bolt_M8x38_custom	1	15 Nm
16	000605	15mm_clamp_Axle_Cap	4	15 Nm
17	001626	Bolt_M10x1x12custom	2	15 Nm
18	001714	Bolt_M10x1x12_custom	2	15 Nm
19	001538	M6 x 16 flathead din 6912	3	6 Nm
20	001764	Bolt_M6x16_ISO4762	2	6 Nm
21	000055	Bolt_M5x10_roundhead	2	3 Nm
22	002317	Bolt_M5x12custom	4	3 Nm
23	000019	Bolt_M4x10	2	2,5 Nm
24	001715	Bolt M4x12 ISO 7380-1	2	2,5 Nm
25	001739	UDH hanger	1	20 Nm
26	001284	Propain_Sixpack_X12_axle_UDH	1	12 Nm
27	000604	Clamp_ring_15mm_axle	6	
28	001977	FlipChip_SS	4	
29	002434	Nut_M4x5custom	2	
30	001857	ISCG05 mount	1	
31	001725	Spacer_15x19x54	1	
32	002138	Spacer_15x19x27	1	
33	002139	Spacer_15x19x36.5	1	
34	002441	Washer_15x24x1.8	4	
35	000602	Dust_cap_seal	2	
36	002374	DT_protector	1	
37	002157	CS_protector	1	
38	002380	SS_protector	1	
39	001713	Action cable base	2	
40	002342	Cable_guide	2	

 Apply grease

 Use Loctite 243 on thread

PROPAIN